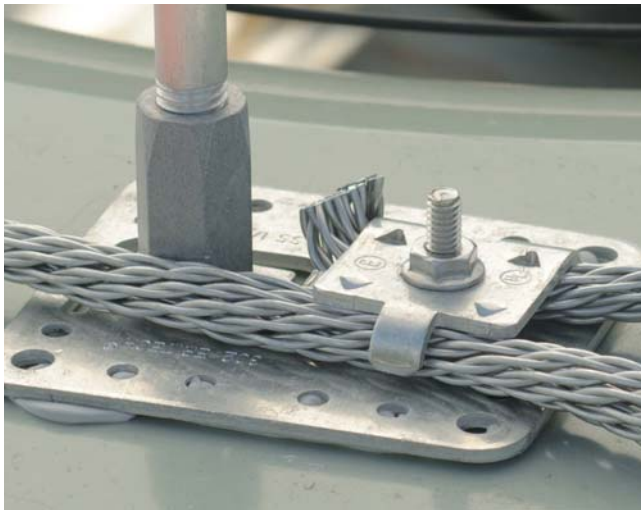
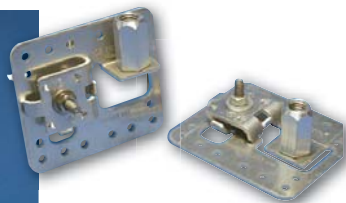


# Point Bases, Braces & Accessories



## Universal Air Terminal Base



Bronze, tinned bronze or aluminum stamped adhesive base for use on flat, vertical or sloping surfaces. Positive single bolt tension for multi-directional cable clamping. Four.281" diameter mounting holes for bolts or screws. Air terminal support tab is field adjustable for any angle as shown from 0-90°, eliminating the need for swivel adaptors.

| Point Dia. (in) | Aluminum | Copper   | Tinned Copper |
|-----------------|----------|----------|---------------|
| 3/8             | -        | LPC30238 | LPC302L38     |
| 1/2             | LPA30212 | LPC30212 | LPC302L12     |
| 5/8             | LPA30258 | LPC30258 | LPC302L58     |

- Field adjusting tool (part number LPT302)
- Also available pre-configured for vertical applications (eg. LPA30212V, aluminum 1/2" point, factory set for vertical applications)

## Air Terminal Bases & Braces

nVent offers a comprehensive line of stamped and cast air terminal bases to address a variety of installation application needs. All bases have a cable range starting from the smallest class 1 conductor to the largest class 2 conductor (see pages 14-16 for a dimensional cross reference). Additional air terminal bases specifically addressing heavy-duty stack installations are included in the industrial stack equipment section.

## Horizontal Air Terminal Base



Bronze or aluminum stamped adhesive base for use on narrow flat surfaces. Positive single bolt tension for multi-directional cable clamping. Four.200" diameter mounting holes for bolts or screws.

| Point Dia. (in) | Aluminum | Copper   |
|-----------------|----------|----------|
| 3/8             | -        | LPC30438 |
| 1/2             | LPA30412 | LPC30412 |
| 5/8             | LPA30458 | LPC30458 |

## Vertical/Horizontal Air Terminal Base



Bronze or aluminum cast adhesive point base for use on flat or vertical surfaces. Positive single bolt tension for multi-directional cable clamping. Four.250" diameter mounting holes for bolts or screws.

| Point Dia. (in)      | Aluminum  | Copper    | Tinned Copper |
|----------------------|-----------|-----------|---------------|
| 3/8                  | -         | LPC30538  | LPC305L38     |
| 1/2                  | LPA30512  | LPC30512  | LPC305L12     |
| 5/8 Horizontal Mount | LPA30558H | LPC30558H | LPC305L58H    |
| 5/8 Vertical Mount   | LPA30558V | LPC30558V | LPC305L58V    |

Also available with a completely through vertical threaded air terminal hole (eg. LPA30512THRU)