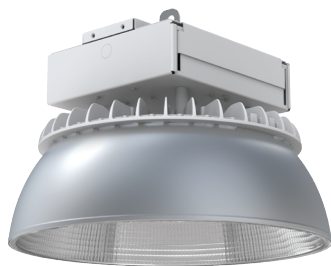


Phuzion™

PHG LED High Bay



Catalog Number	
Notes	Type

Description

The PHG LED luminaire is designed for light industrial applications where environments are less extreme, but comfortable, uniform lighting and dependable performance are still highly desired. Typical applications include manufacturing, warehouses, automotive, retail, food storage and gymnasiums. Certain airborne contaminants can diminish the integrity of acrylic and/or polycarbonate. [Click here for Acrylic-Polycarbonate Compatibility table for suitable uses.](#) Certain airborne contaminants may adversely affect the functioning of LEDs and other electronic components, depending on various factors such as concentrations of the contaminants, ventilation, and temperature at the end-user location. [Click here for a list of substances that may not be suitable for interaction with LEDs and other electronic components.](#)

Optics

- One-piece prismatic borosilicate glass reflector and refractor offer the highest levels of uniformity and glare-free performance in its class. Refractor protects LEDs from unwanted dust, helping to maintain delivered lumens.
- Borosilicate glass won't fade and offer the highest levels of luminosity over time.
- IP65 rated refractor protects LEDs from unwanted dust helps maintain delivered lumens.
- Prismatic acrylic available for food storage areas or where glass is not preferred.
- PrismPack® optic: Prismatic borosilicate optic with sealed aluminum cover to minimize dirt accumulation and improve optical efficiency. Use when uplight is not desired or required.

Mechanical

- Hands free wiring design allows for quick and easy installations.
- Open ventilated design naturally pulls heat up and away from luminaire, extending the life of critical components.
- Robust cast aluminum heat sink (0.6% CU content) and offset aluminum electrical compartment maximize thermal performance.
- Ambient range -40°F (-40°C) up to 131°F (55°C) ambient rating.
- Super durable TGIC thermoset powder coat finish provides 1500 hours salt fog rating.

Electrical

- Standard 0-10volt dimming.
- Fault-tolerant LED light engine.
- Luminaire Surge Protection Level: Designed to withstand up to 6kV/3kA per ANSI C82.77-5-2015.
- CCT: 3000K, 3500K, 4000K, 5000K.
- CRI: 70CRI, 80CRI & 90CRI.
- Dynamic temperature sensing is standard to protect the electronic components in the event the maximum operating ambient temperature is exceeded.

Wireless Networking

nLight® AIR is the ideal solution for retrofit or new construction spaces where additional wiring can be labor intensive. It is available with or without an integral sensor. Integrated smart sensors or dimming and switching modules must be part of each luminaire in the nLight Air network, which can be grouped to control multiple luminaires. It pairs to other luminaires and wall switches through our mobile app. CLAIRITY PRO, which allows for simple sensor adjustment. The granularity of control with the digital PIR occupancy detection and daylight sensing makes this a great solution for any application.

Listings

- CSA Certified to UL and C-UL standards for ambient temperatures ranging from -40°F (-40°C) up to 131°F (55°C).
- NOM certified.
- DesignLights Consortium® (DLC) Premium qualified product and DLC qualified product. Not all versions of this product may be DLC Premium qualified or DLC qualified. Please check the DLC Qualified Products List at www.designlights.org/QPL to confirm which versions are qualified.

Warranty

5-year limited warranty. Complete warranty terms located at: www.acuitybrands.com/support/warranty/terms-and-conditions

NOTE: Actual performance may differ as a result of end-user environment and application.

All values are design or typical values, measured under laboratory conditions at 25 °C.

Specifications subject to change without notice.

Typical Applications

- Light Manufacturing
- Warehousing
- Retail
- Food Storage
- Automotive
- Gymnasium

Dimensions: Inches (millimeters) unless otherwise noted.

Diameter: 19.8"
Height: 12.65"
Weight: Glass 29 lbs., Acrylic 17 lbs.
Emergency Internal: Add 10.5 lbs.

A+ Capable Luminaire

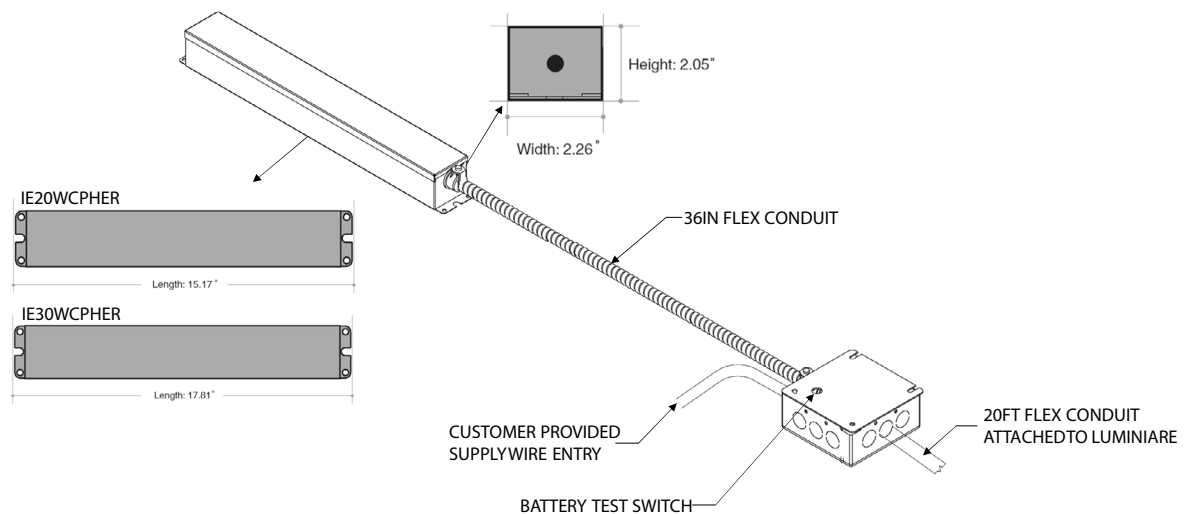
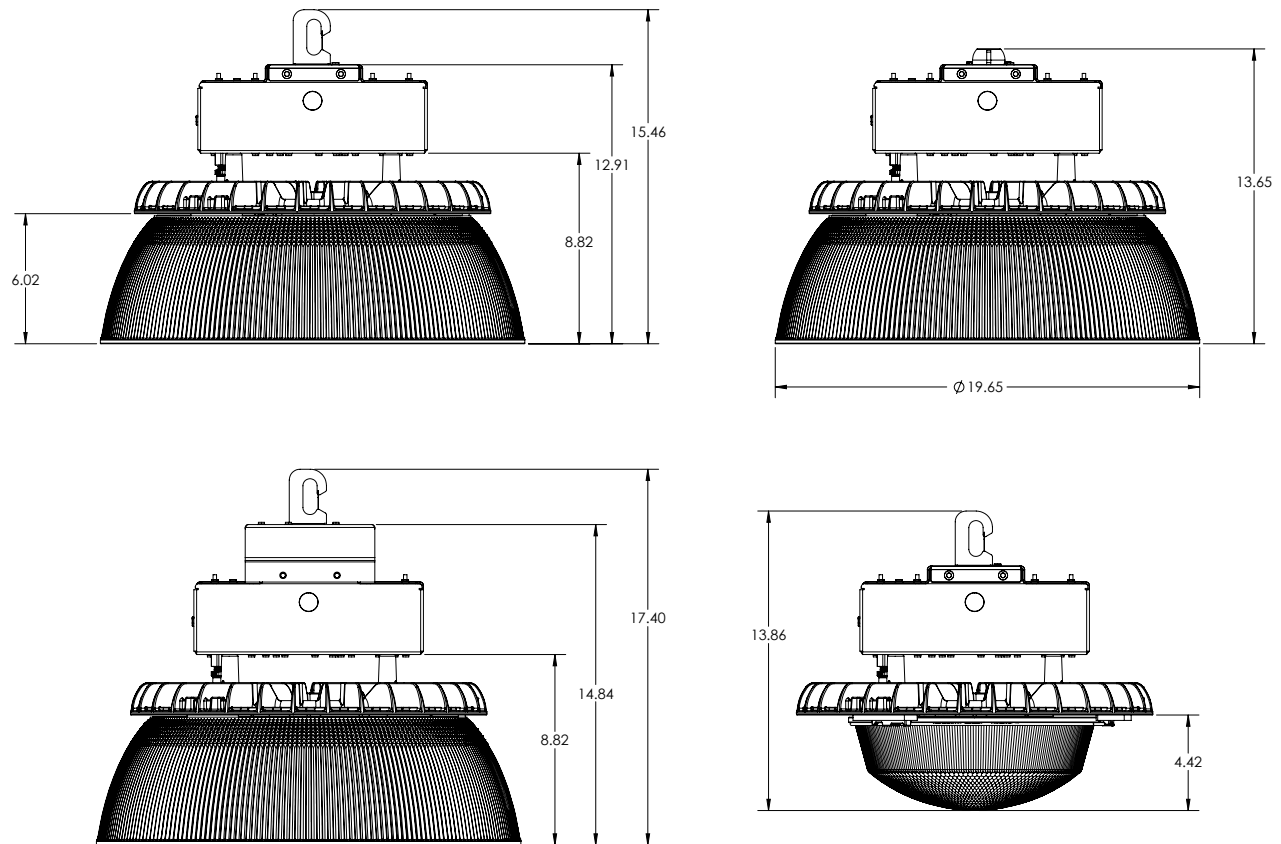
This item is an A+ capable luminaire, which has been designed and tested to provide consistent color appearance and out-of-the-box control compatibility with simple commissioning.

- All configurations of this luminaire meet the Acuity Brands' specification for chromatic consistency
- This luminaire is part of an A+ Certified solution for nLight® or XPoint™ Wireless control networks marked by a **shaded background***

To learn more about A+, visit www.acuitybrands.com/aplus.

*See ordering tree for details

DIMENSIONAL DATA





A+ Capable options indicated by this color background.

ORDERING INFORMATION ‡

Example: PHG 24000LM SEF NGG MVOLT 40K 80CRI WHK DWHXD

Series	Lumens ‡	Performance package	Optical Assembly	Voltage
PHG	9000LM 9,000 nominal lumens	SEF Standard efficiency	NGG Narrow glass refractor and glass reflector	MVOLT Auto sensing (120-277)
	12000LM 12,000 nominal lumens	HEF High efficiency	MGG Medium glass refractor and glass reflector	HVOLT Auto sensing (347/480) ‡
	15000LM 15,000 nominal lumens		WGG Wide glass refractor and glass reflector	XVOLT Auto sensing (277-480V) ‡
	18000LM 18,000 nominal lumens		NGGFR Frosted narrow glass refractor and glass reflector	120 120V
	24000LM 24,000 nominal lumens		MGGFR Frosted medium glass refractor and glass reflector	208 208V
	30000LM 30,000 nominal lumens		WGGFR Frosted wide glass refractor and glass reflector	240 240V
	36000LM 36,000 nominal lumens		NAA Narrow acrylic refractor and acrylic reflector	277 277V
			WAA Wide acrylic refractor and acrylic reflector	347 347V
			NGA Narrow glass refractor and acrylic reflector	480 480V
			MGA Medium glass refractor and acrylic reflector	277X 277V ‡
			WGA Wide glass refractor and acrylic reflector	347X 347V ‡
				480X 480V ‡

Color temperature	Color rendering index	Mounting	Options
30K 3000K CCT	70CRI	WHK Wire hook	<u>Individual Sensors:</u> ‡ LSXR50 Passive infrared indoor occupancy sensor, high bay aisleway, default time delay 10 minutes (with minimum 15 minutes on time LINK) ‡
35K 3500K CCT	80CRI	PM Pendant 3/4" female	
40K 4000K CCT	90CRI	QD Quick disconnect ‡	
50K 5000K CCT		NDT Non-disconnect thru-wire	LSXR50 HL Passive infrared indoor occupancy sensor, high mount aisleway, minimum dim level of driver, default time delay 10 minutes (with minimum 15 minutes on time LINK)
		QR Quick disconnect retrofit ‡	LSXR50 P Passive infrared indoor occupancy sensor, high bay aisleway, switching photocell on/off LINK ‡
		QN Non-disconnect retrofit ‡	LSXR6 Passive infrared indoor occupancy sensor, high mount 360°, default time delay 10 minutes (with minimum 15 minutes on time LINK) ‡
		AC10 10' aircraft cables (ships as pair)	LSXR6 HL Passive infrared indoor occupancy sensor, high mount 360°, minimum dim level of driver, default time delay 10 minutes (with minimum 15 minutes on time LINK) ‡
		AC20 20' aircraft cables (ships as pair)	LSXR6 P Passive infrared indoor occupancy sensor, high mount 360°, switching photocell (on/off) default time delay 10 minutes (with minimum 15 minutes on time LINK) ‡
			LSXR10 Passive infrared indoor occupancy sensor, low mount 360°, default time delay 10 minutes (with minimum 15 minutes on time LINK) ‡
			LSXR10 HL Passive infrared indoor occupancy sensor, low mount 360°, minimum dim level of driver, default time delay 10 minutes (with minimum 15 minutes on time LINK) ‡
			LSXR10 P Passive infrared indoor occupancy sensor, low mount 360°, switching photocell (on/off) default time delay 10 minutes (with minimum 15 minutes on time LINK) ‡
			LSX45 OCC BTP LT 360° High mount occ. sensor, pre-wired, Bluetooth LINK ‡
			LSX45 HL BTP LT 360° High mount sensor w/HL default, pre-wired, Bluetooth LINK ‡
			LSX45 ADC BTP LT 360° High mount sensor w/ADC default, pre-wired, Bluetooth LINK ‡
			LSX45 ANL BTP LT 360° High mount sensor w/ANL default, pre-wired, Bluetooth LINK ‡
			<u>nLight Wired:</u> ‡ nPP16 D nLight dimming & switching module LINK ‡
			<u>nLight Wireless:</u> ‡ NLTAIR2 RLSXR6 nLight AIR Generation 2 enabled 360° high mount sensor LINK ‡ NLTAIR2 RLSXR6 EM nLight AIR Generation 2 enabled 360° high mount sensor with emergency relay (not available with battery pack LINK) ‡ NLTAIR2 RLSXR10 nLight AIR Generation 2 enabled 360° low mount sensor LINK ‡ NLTAIR2 RLSXR10 EM nLight AIR Generation 2 enabled 360° low mount sensor with emergency relay (not available with battery pack LINK) ‡ NLTAIR2 rPP20 D nLight AIR Generation 2 enabled dimming and switching module LINK ‡ NLTAIR2 rPP20 D ER nLight AIR Generation 2 enabled dimming and switching module with emergency relay (not available with battery pack LINK) ‡ NLTAIR2 rPP20 D EM nLight Generation 2 enabled dimming and switching module with emergency relay (not available with battery pack LINK) ‡ NLTAIR2 RIO nLight AIR (wireless) gen 2 control device (dimming & switching LINK) ‡
			<u>X-point Wireless:</u> ‡ XAD XPoint™ wireless enabled LINK ‡ XAD924 XPoint™ Wireless 0-10V relay, internal, lower max ambient, meets UL924 LINK ‡ XPA CMRB6 XPoint™ wireless enabled with photocell sensor & occupancy sensor LINK ‡
			<u>Other Controls:</u> ‡ AO Field adjustable output dimming ‡

NOTE: ‡ indicates option chosen has ordering restrictions. Please reference ordering restrictions chart. Options are sorted alphanumerically.

Options continued on page 4.
For accessories and footnotes, see page 4.

ORDERING INFORMATION (cont'd.) ‡

Options (continued)			Finish	
Cordsets: ‡		Other options:	DGXD	Gray, super durable
CPTL16W	6ft white cord with NEMA twist lock plug, 15 amp, 16 gauge, 3 conductor	HKMAR	DWHXD	White, super durable
CPTL20A16W	6ft white cord with NEMA twist lock plug, 20 amp, 16 gauge, 3 conductor	LPMD	DNXD	Satin nickel, super durable
CPSB16W	6ft white cord with NEMA straight blade plug, 15 amp, 16 gauge, 3 conductor	HKMD	DBXD	Black, super durable
CNP16W	6ft white cord no plug, 16 gauge, 3 conductor	HK455	DGRXD	Graphite, super durable
CNP164CW	6ft white cord no plug, 16 gauge, 4 conductor	WGX		
CNP165CDW	6ft white cord no plug, 16 gauge, 5 conductors that include low voltage dimming wires	SCK36		
PHCB	Powerhook cord for 120-277, 347V	SCK72		
PHCBL8480	Powerhook cord for 480V	SCK120		
OCS	RELOC® OnePass® selectable cable 6', 3 conductor, factory installed	E10WMCP		
UPH35	Thru wire power hook, must specify voltage	E15WMCP		
UPH36	Pendant power hook, must specify voltage	IE20WCPHE		
		IE30WCPHE		
		IE20WCPHER		
		IE30WCPHER		
		IE18WCPHECW		
		ETS		
		GRR		
		NSG		
		SPD		
		USPOM		

Accessories: Order as separate catalog number.			
PHGCHAIN3	3ft safety chain	LPFD	Safety loop 3/4" female (PF-116-A)
PHGCHAIN6	6ft safety chain	HKFD	Safety hook 3/4" female (PF-122-A)
PHGCHAIN10	10ft safety chain	HKMAR	Safety anti-rotational hook, 3/4" male (PF-129-A)
PHGWGA	Wireguard	LPMD	Safety loop 3/4" male (PF-105-B)
UPH 35 SM *** WH	Thru-wire, must specify voltage. Available with 120, 208, 240, 277, 348V. Need PHCB option on luminaire	HKMD	Safety hook, 3/4" male (PF-121-A)
UPH 36 PM *** WH	Pendant, must specify voltage. Available with 120, 208, 240, 277, 348V. Need PHCB option on luminaire	HK455	Safety hook aluminum, 3/4" male
UPH 35 SM L8480 WH	Thru-wire. Available with 480 voltage only. Need PHCBL8480 option on luminaire	HAC10	10' aircraft cables (ships as pair)
UPH 36 PM L8480 WH	Pendant. Available with 480 voltage only. Need PHCBL8480 option on luminaire	HAC20	20' aircraft cables (ships as pair)

NOTE: ‡ indicates option chosen has ordering restrictions. Please reference ordering restrictions chart, page 5. Options are sorted alphanumerically.