

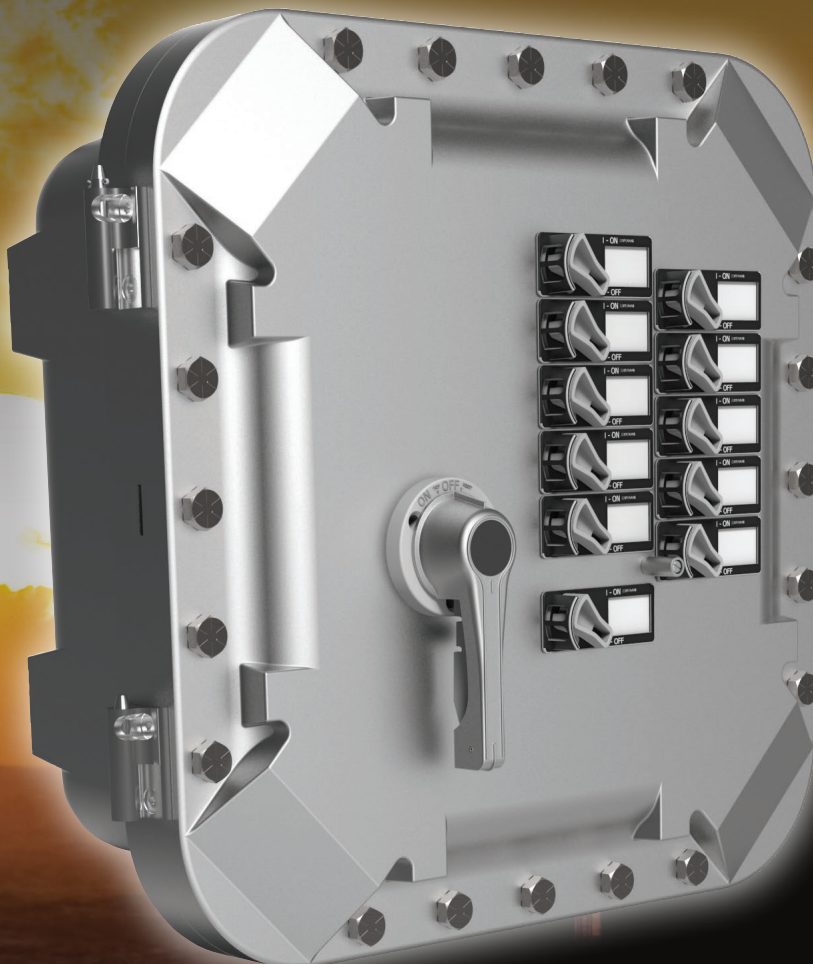


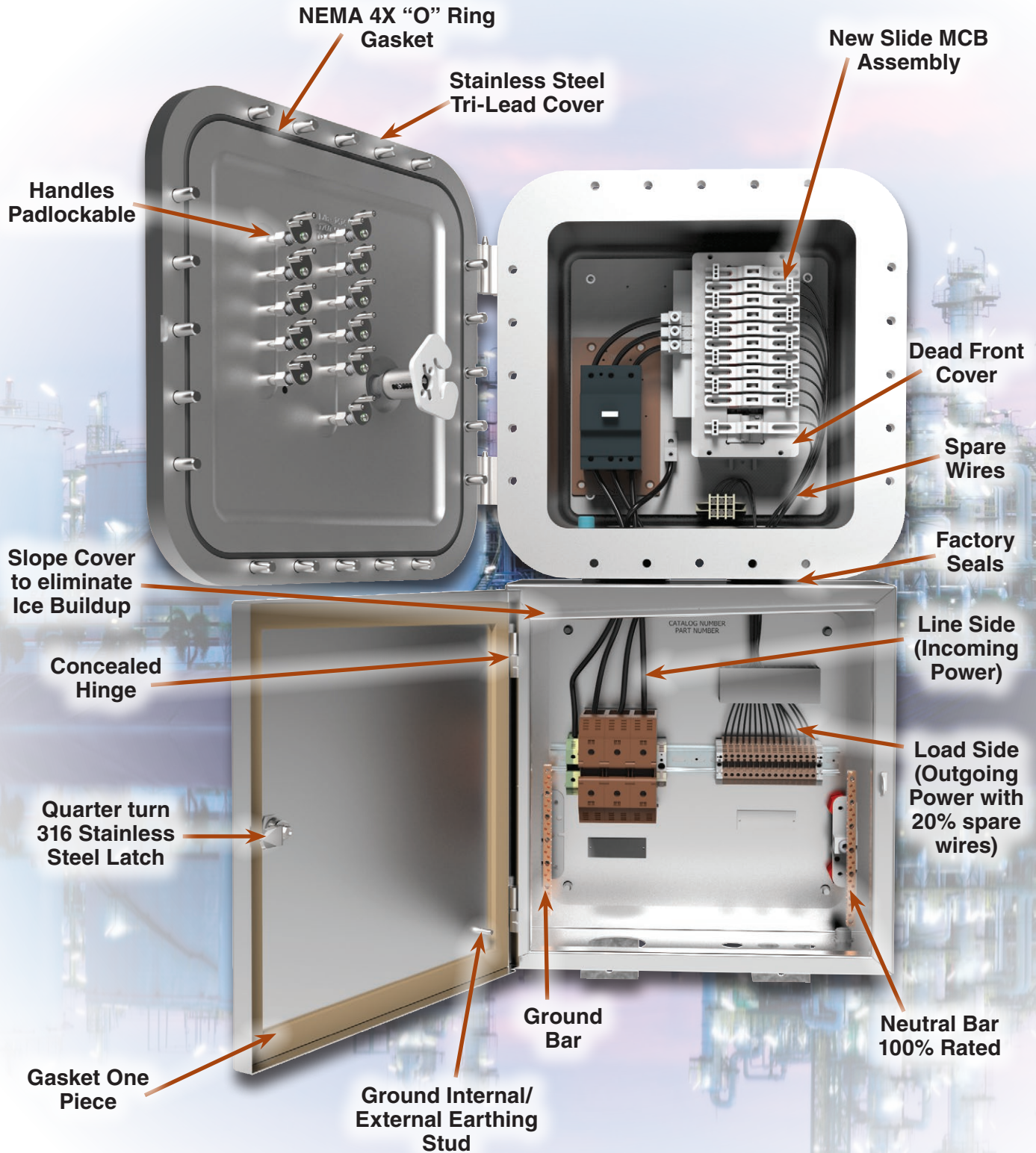
**KILLARK®**

# EXBLI & EXBSPI Series

## Circuit Breaker Panelboards

*for Harsh and Hazardous Environments*





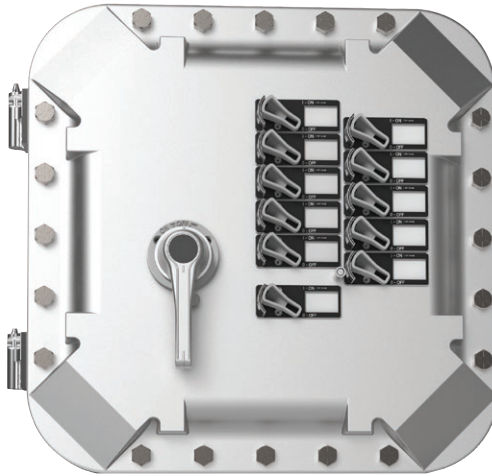


# DISTRIBUTION

EXBLI/EXBSPI SERIES



## IEC/NEC CIRCUIT BREAKER PANELBOARDS



### FEATURES-SPECIFICATIONS

#### Applications

New to Killark are the IEC/NEC rated panelboards. If you have a Harsh and Hazardous location (corrosive, salt laden, flammable gas, vapors or explosive dust particles) this is where the Killark EXBLI or EXBSPI panelboard excels. Our new panelboard is suitable for use from the oil sands of Texas to the rigs of Saudi Arabia to the Far East.

We have two types – Our IEC (UL1077) panel offers both single and three phase applications with or without switched neutrals. Branch MCB's in single, two, three and four pole, RCBO's for earth leakage detection are available in 30, 100 or 300mA Sensitivity.

Our NEC (UL489) panel offer single and three phase applications, branch MCB's in single, two, three and four pole. This type can also offer a factory sealed arrangement using our USF 316L stainless steel wiring chamber with or without removable gland plates. All incoming "Line" and outgoing "Load" connections are made in the wiring chamber; this eliminates the need for seal fittings for Division 2 area's.

#### Features:

- All hardware is stainless steel, cover bolts are quick release Tri-Lead.
- All circuit breakers are pad lockable in the "ON" or "OFF" positions for up to three padlocks (to allow ease of lock out – tag out capabilities).
- Insulated copper bus bars mount on our Din Rail mounted branch breakers and the cover of the explosion proof enclosure is pre-drilled for future expansion or changing breakers in the field.
- Solid neutral (tin plated) standard for single and three phase.
- ABB circuit breakers have a wide temperature range from -20 to +70°C.

#### Standard Materials

- Breaker enclosure: Cast copper free aluminum (less than 4/10th of 1 %), Cover Bolts: Type 316 stainless steel quick turn (Tri-Lead), finish Aluminum Lacquer Paint.

#### Electrical Ratings EXBLI

- Single Phase – 120/240 VAC, 3 Wire, 60hz
- Three Phase – 120/208 VAC, 4 Wire, 60Hz

#### ATEX Certified

Class I, Div. 1 & 2, Groups B<sup>①</sup>, C, D  
 Class I, Zones 1 & 2, Groups IIB+H<sub>2</sub>, IIA  
 Class II, Div. 1 & 2, Groups E, F, G  
 Class III, Div. 1 & 2  
 NEMA 3, 4, 4X, 7(B, C, D), 9(E, F, G)  
 CENELEC/ATEX/IEC - Ex  
 Ex d IIB + H<sub>2</sub> T5 or T6  
 Ex tD A21 IP66  
 Ta < +60° C



- #UL886 – Outlet Boxes and Fittings for use in Hazardous (Classified) Locations. File E10514
- #UL698 & #UL1203 – Explosion Proof and Dust Ignition Proof Electrical Equipment. Files #E83969 & E12379
- #C22.2 No. 30-M1986 – Explosion Proof Enclosure for use in Class I Hazardous Locations. File #LR11716

CENELEC Ex II 2 GD

PTB 07 ATEX 1025U (Empty Housing)  
 PTB 07 ATEX 1024x (Enclosures w/Controls)  
 IEC Ex 07.0022U  
 IEC Ex 07.0023

#### Electrical Ratings EXBSPI

- Single Phase – 277 VAC, 3 Wire, 60hz
- Three Phase – 277/480Y VAC, 4 Wire, 60Hz

#### Panel Selection Factors

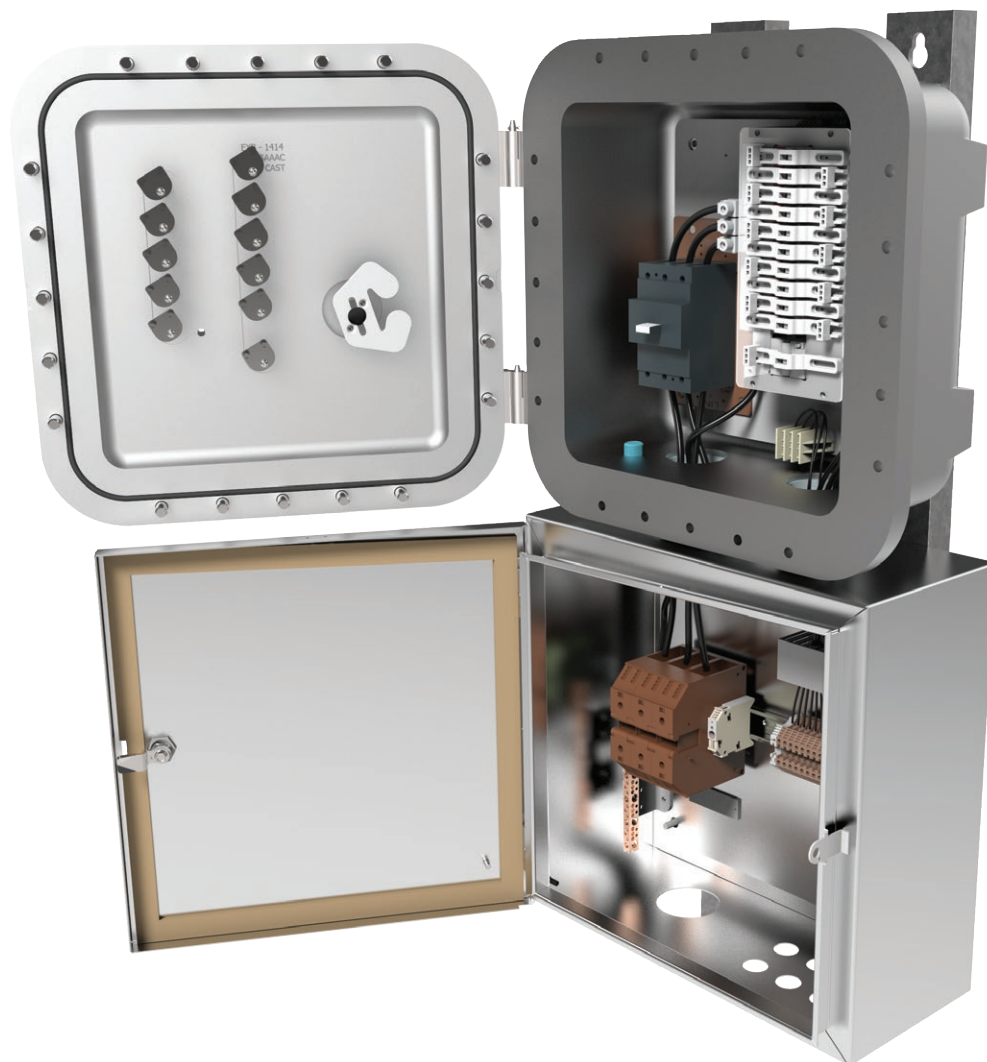
- Basic information required when specifying panelboards is as follows:
- Service Requirements – Voltage, phases and frequency
- Interrupting capacity
- Amperage Rating of Main (Lugs only or Breaker)
- Branch Breaker Requirements
  - » Type
  - » Number
  - » Poles
  - » Amperage
  - » RDC Requirements

SUFFIX NUMBER	DESCRIPTION	SUFFIX NUMBER	DESCRIPTION
SU-3B-4X	Drain & Breather installed, NEMA 4X/7 BCD	SU1	Stainless steel external hardware NEMA 4X
SU-10B-4X	Drain installed, NEMA 4X/7 BCD	SU9PEEX	Grey powder polyester outer surface
SU-11B-4X	Breather installed NEMA 4X/7 BCD	SU9PEIO	Grey powder polyester in & out surface
SU-3ATEX	Drain & Breather installed ATEX Group B	SU9PESEX	Specify color outer surface (RAL number)
EB	Eyebolt, Qty of 2	SU14	Fungus proofing inner surface
TP	Toe Plate (recommended for larger panels)	SU93	Do not paint
GS150	150 Amp Ground Strap		

① Conduits must be sealed within 18" for Group B applications.



## EXBLI LIGHTING PANELBOARD

**OPTIONAL**

NEC (UL 489) Factory  
Sealed Panelboard

**EXBLI LIGHTING PANELBOARD**

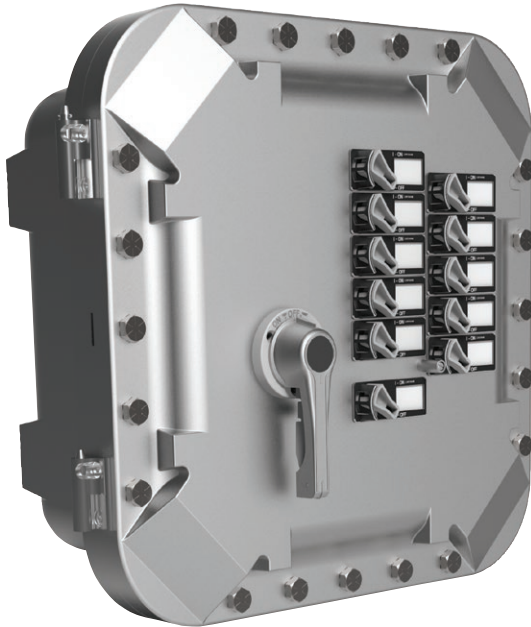
MAIN LUG ONLY					MAIN CIRCUIT BREAKER				
ELECTRICAL RATING	NUMBER OF BRANCH POLE	MAIN LUG RATING AMP	CATALOG NUMBER BASIC NUMBER	PANEL SIZE	ELECTRICAL RATING	NUMBER OF BRANCH POLE	MAIN LUG RATING AMP	CATALOG NUMBER BASIC NUMBER	PANEL SIZE
Single Phase 3 Wire with Solid Neutral 120/240VAC	6	80	EXBLI-16ML80	H	Single Phase 3 Wire with Solid Neutral 120/240VAC	6	80	EXBLI-16MB*	A
	12	130	EXBLI-112ML130	I		12	130	EXBLI-112MB*	B
	18	130	EXBLI-118ML130	J		18	130	EXBLI-118MB*	C
	24	260	EXBLI-124ML260	K		24	260	EXBLI-124MB*	D
	36	260	EXBLI-136ML260	L		36	260	EXBLI-136MB*	E
	54	260	EXBLI-154ML260	M		54	260	EXBLI-154MB*	F
	90	260	EXBLI-172ML260	N		72	260	EXBLI-172MB*	G
Three Phase 4 Wire with Solid Neutral 120/208VAC	6	80	EXBLI-36ML80	H	Three Phase 4 Wire with Solid Neutral 120/208VAC	6	80	EXBLI-36MB*	A
	12	130	EXBLI-312ML130	I		12	130	EXBLI-312MB*	B
	18	130	EXBLI-318ML130	J		18	130	EXBLI-318MB*	C
	24	260	EXBLI-324ML260	K		24	260	EXBLI-324MB*	D
	36	260	EXBLI-336ML260	L		36	260	EXBLI-336MB*	E
	54	260	EXBLI-354ML260	M		54	260	EXBLI-354MB*	F
	90	260	EXBLI-372ML260	N		72	260	EXBLI-372MB*	G

# DISTRIBUTION

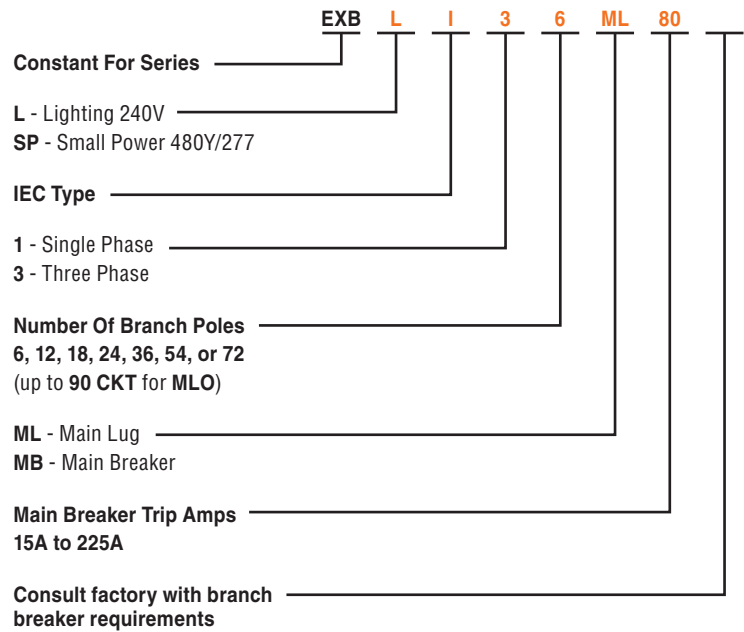
EXBLI/EXBSPI SERIES



## EXBSPI LIGHTING PANELBOARD



### Catalog Logic – for basic IEC Panelboard Enclosures



## EXBSPI LIGHTING PANELBOARD

MAIN LUG ONLY					MAIN CIRCUIT BREAKER				
ELECTRICAL RATING	NUMBER OF BRANCH POLE	MAIN LUG RATING AMP	CATALOG NUMBER BASIC NUMBER	PANEL SIZE	ELECTRICAL RATING	NUMBER OF BRANCH POLE	MAIN LUG RATING AMP	CATALOG NUMBER BASIC NUMBER	PANEL SIZE
Single Phase 3 Wire with Solid Neutral 277VAC	6	80	EXBSPI-16ML80	H	Single Phase 3 Wire with Solid Neutral 277VAC	6	80	EXBSPI-16MB*	A
	12	130	EXBSPI-112ML130	I		12	130	EXBSPI-112MB*	B
	18	130	EXBSPI-118ML130	J		18	130	EXBSPI-118MB*	C
	24	260	EXBSPI-124ML260	K		24	260	EXBSPI-124MB*	D
	36	260	EXBSPI-136ML260	L		36	260	EXBSPI-136MB*	E
	54	260	EXBSPI-154ML260	M		54	260	EXBSPI-154MB*	F
	90	260	EXBSPI-172ML260	N		72	260	EXBSPI-172MB*	G
Three Phase 4 Wire with Solid Neutral 277/480YVAC	6	80	EXBSPI-36ML80	H	Three Phase 4 Wire with Solid Neutral 277/480YVAC	6	80	EXBSPI-36MB*	A
	12	130	EXBSPI-312ML130	I		12	130	EXBSPI-312MB*	B
	18	130	EXBSPI-318ML130	J		18	130	EXBSPI-318MB*	C
	24	260	EXBSPI-324ML260	K		24	260	EXBSPI-324MB*	D
	36	260	EXBSPI-336ML260	L		36	260	EXBSPI-336MB*	E
	54	260	EXBSPI-354ML260	M		54	260	EXBSPI-354MB*	F
	90	260	EXBSPI-372ML260	N		72	260	EXBSPI-372MB*	G



## BREAKER RATINGS

## EXBLI &amp; EXBSPI CIRCUIT BREAKER RATINGS, ABB

## IEC (UL1077), MCB

TYPE	POLE	VOLTS VAC	AMPERES SYMMETICAL
S200C	1	277	6,000 AIC
	2	277/480Y	6,000 AIC
	3	277/480Y	6,000 AIC
	4	277/480Y	6,000 AIC
S200D	1	277	6,000 AIC
	2	277/480Y	6,000 AIC
	3	277/480Y	6,000 AIC
	4	277/480Y	6,000 AIC
S200M	1	277	10,000 AIC
	2	277/480Y	10,000 AIC
	3	277/480Y	10,000 AIC
	4	277/480Y	10,000 AIC

TYPE RCBO	POLE	VOLTS VAC	AMPERES SYMMETICAL	SENSITIVITY
DS201	1+N	230	10,000 AIC	30, 100, 300mA
DS202	2	230	10,000 AIC	30, 300mA

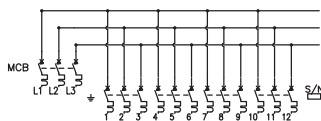
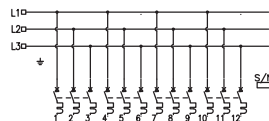
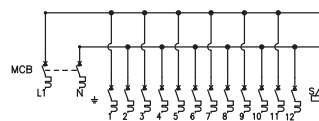
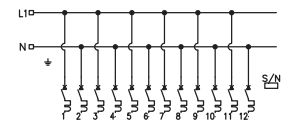
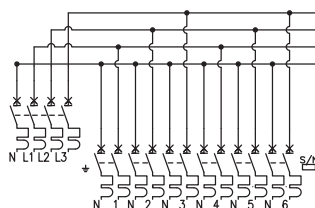
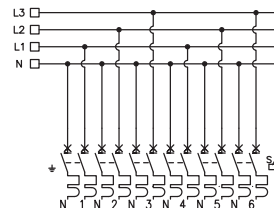
## NEC (UL489), MCB, NOT RATED FOR SWITCHED NEUTRAL

TYPE	POLE	VOLTS VAC	AMPERES SYMMETICAL
SU200MC	1	240	10,000 AIC
	2	277/480Y	10,000 AIC
	3	277/480Y	10,000 AIC
	4	277/480Y	10,000 AIC
S200U-K	1	240	10,000 AIC
	2	240	10,000 AIC
	3	240	10,000 AIC
	4	240	10,000 AIC
S200UP-K	1	277	10,000 AIC
	2	277/480Y	10,000 AIC
	3	277/480Y	10,000 AIC
	4	277/480Y	10,000 AIC

## MAIN CIRCUIT BREAKER

TYPE	POLE	VOLTS VAC	AMPERES SYMMETICAL	AMP TRIP
Tmax T1*	3	347/600Y	22,000 AIC	15 - 100
	4	347/600Y	22,000 AIC	15 - 100
Tmax T2	3	480	35 - 65,000 AIC	15 - 100
	4	480	35 - 65,000 AIC	15 - 100
Tmax T3	3	347/600Y	25 - 35,000 AIC	60 - 225
	4	347/600Y	25 - 35,000 AIC	60 - 225
Tmax T4	3	600	25 - 35,000 AIC	125 - 250
	4	600	25 - 35,000 AIC	125 - 250
Tmax XT1	3	347/600Y	25, 35, 65,000 AIC	15 - 125
	4	347/600Y	25, 35, 65,000 AIC	15 - 125
Tmax XT2	3	600	25, 35, 65,000 AIC	15 - 125
	4	600	25, 35, 65,000 AIC	15 - 125
Tmax XT3	3	347/600Y	25, 35, 65,000 AIC	60 - 225
	4	347/600Y	25, 35, 65,000 AIC	60 - 225
Tmax XT4	3	600	25, 35, 65,000 AIC	25 - 250
	4	600	25, 35, 65,000 AIC	25 - 250

\* Will be obsolete by 2018

Three Phase  
Main Circuit BreakerThree Phase  
Main Lug OnlySingle Phase  
Main Circuit BreakerSingle Phase  
Main Lug OnlyThree Phase w/  
Switched Neutral  
4 Pole Main Circuit BreakerThree Phase w/  
Switched Neutral  
Main Lug Only

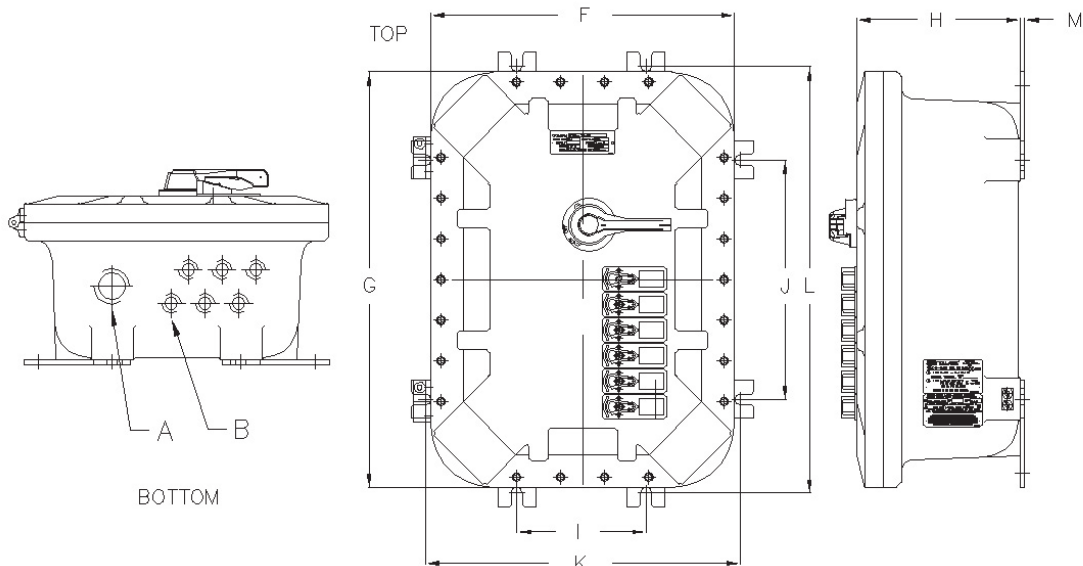




## IEC CIRCUIT BREAKER PANELBOARDS

EXB DIMENSIONS MAIN BREAKER														
CATALOG NUMBER	# OF CIRCUITS W/MAIN BREAKER	STD CONDUITS AT BOTTOM (NPT)				EXTERNAL DIMENSION (IN)			MOUNTING DIMENSIONS (INCHES)					LBS (KG)
		A	B	QTY B	QTY B RH SIDE	F	G	H	I	J	K	L	M	
EXB-12126 N34	6	1-1/2"	3/4"	3	—	16.38 (416)	13.38 (340)	8.69 (221)	6.94 (176)	6.94 (176)	14.94 (379)	14.94 (379)	0.25 (6)	112 (50.80)
EXB-14146 N34	12	1-1/2"	3/4"	6	—	19.25 (489)	19.25 (489)	9.40 (239)	9.00 (229)	9.00 (229)	17.00 (432)	17.00 (432)	0.25 (6)	160 (72.57)
EXB-16166 N34	18	1-1/2"	3/4"	9	—	20.38 (518)	20.38 (518)	9.19 (233)	10.94 (278)	10.94 (278)	18.94 (481)	18.94 (481)	0.25 (6)	195 (88.45)
EXB-18186 N34	24	1-1/2"	3/4"	12	—	23.25 (591)	23.25 (591)	10 (254)	13.38 (340)	13.38 (340)	21.38 (543)	21.38 (543)	0.25 (6)	256 (116.12)
EXB-18248 N34	36	1-1/2"	3/4"	18	—	22.38 (568)	28.38 (721)	11.75 (298)	13 (330)	19 (483)	21 (533)	27 (686)	0.25 (6)	290 (131.54)
EXB-18368 N34	54	2-1/2"	3/4"	20	7	22.38 (568)	40.38 (1026)	12.38 (314)	13.25 (337)	31.5 (800)	21 (533)	39.5 (1003)	0.25 (6)	440 (199.58)
EXB-24368 N34	72	2-1/2"	3/4"	30	6	29.25 (743)	41.25 (1048)	12.4 (315)	19.56 (497)	31.56 (802)	27.56 (700)	39.56 (1005)	0.25 (6)	560 (254.01)

EXB DIMENSIONS MAIN LUG ONLY														
CATALOG NUMBER	# OF CIRCUITS MAIN LUG ONLY	STD CONDUITS AT BOTTOM (NPT)				EXTERNAL DIMENSION (IN)			MOUNTING DIMENSIONS (INCHES)					LBS (KG)
		A	B	QTY B	QTY B RH SIDE	F	G	H	I	J	K	L	M	
EXB-8106 N34	6	1-1/2"	3/4"	3	—	12.32 (313)	14.32 (364)	8.32 (211)	N/A	8.00 (203)	9.88 (251)	N/A	0.25 (6)	112 (50.80)
EXB-8126 N34	12	1-1/2"	3/4"	6	—	13.25 (337)	17.25 (438)	8.70 (221)	3.82 (97)	7.82 (199)	10.38 (264)	14.38 (365)	0.25 (6)	160 (72.57)
EXB-12186 N34	18	1-1/2"	3/4"	9	—	16.38 (416)	22.38 (568)	9.06 (230)	6.94 (176)	12.88 (327)	14.94 (379)	20.88 (530)	0.25 (6)	195 (88.45)
EXB-12186 N34	24	1-1/2"	3/4"	12	—	16.38 (416)	22.38 (568)	9.06 (230)	6.94 (176)	12.88 (327)	14.94 (379)	20.88 (530)	0.25 (6)	256 (116.12)
EXB-18186 N34	36	1-1/2"	3/4"	16	2	23.25 (591)	23.25 (591)	10 (254)	13.38 (340)	13.38 (340)	21.38 (543)	21.38 (543)	0.25 (6)	290 (131.54)
EXB-18368 N34	54	2-1/2"	3/4"	20	7	22.38 (568)	40.38 (1026)	12.38 (314)	13.25 (337)	31.5 (800)	21 (533)	39.5 (1003)	0.25 (6)	440 (199.58)
EXB-24368 N34	72	2-1/2"	3/4"	18	18	29.25 (743)	41.25 (1048)	12.4 (315)	19.56 (497)	31.56 (802)	27.56 (700)	39.56 (1005)	0.25 (6)	560 (254.01)



# Distribution Equipment from KILLARK



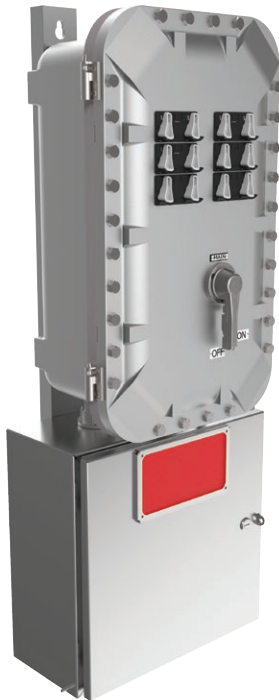
## B7C Circuit Breaker Enclosures

Available from 15AT thru 1200AT, two, three or four pole, available with standard NPT outlets, Metric or both. Mounting pans are pre-drilled to accept the following molded case circuit breakers (Square D, ABB, Eaton, GE and Siemens). All external circuit breaker operating handles are padlock able in the "on" or "off" position. Ductile mounting lugs for adjusting to irregular mounting surfaces. All cover bolts are 316 grade stainless steel.



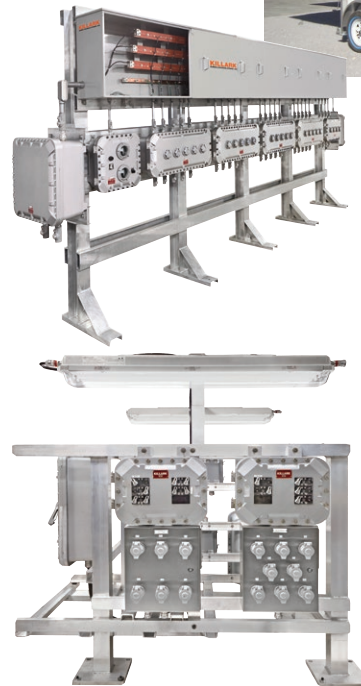
## B7L Lighting Panelboard

Available from 12 to 42 circuits for MLO (main lug only) to MCCB (main circuit breaker) styles. All external circuit breaker operating handles are padlock able in the "on" or "off" position. All cover bolts are quick release tri-lead 316 grade stainless steel, ductile mounting lugs.



## D2LC Series

New from Killark is the factory sealed lighting panelboards with type UL 489 miniature circuit breakers (MCB) along with silver plated copper bus chassis. This new design offers a full range of molded case circuit breakers for the main circuit breaker along with a full range (12, 18, 30, 36 and 42 circuit chassis). Line (incoming power) and Load (outgoing power) connections are pre-wired to a stainless steel wiring chamber. This will eliminate the need for pouring seals and make for a quicker connection.



## Switchrack Assemblies

Integrated solution for group mounting Explosion proof or Flameproof enclosures, mounted and wired. Available with conduit and fittings or armored cable and cable glands. Structures are designed for the specific seismic and wind load requirements for your specific location. Whatever your requirements, we can provide a solution.



HKSB-EXBLI 09-17 © Killark, 2017

**KILLARK®**

**Hubbell Killark**

3940 Dr. Martin Luther King Drive • St. Louis, MO 63113

Phone: (314) 531-0460 • Fax: (314) 531-7164

[www.hubbell-killark.com](http://www.hubbell-killark.com)



**Harsh & Hazardous**