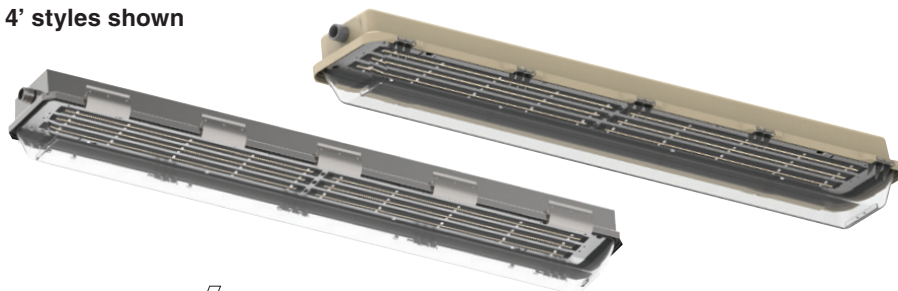




LZ2NL/LZ2SL SERIES

LZ LED INTRODUCTION & LOGIC

4' styles shown



Class I, Div. 2, Groups A, B, C, D
Class I, Zone 2, Groups IIC, IIB, IIA
Class II, Div. 1 & 2, Groups E, F, G
AEx nAII, Ex nAII
Wet Locations
Type 4X, IP66

Certified - File LR11713

ABS Type Approval (L32NL, L32SL)
NSF Food Handling (LZ2NL)

LINEAR^{lite}® *

* marca registrada MEXICO

FEATURES-SPECIFICATIONS

Applications

Linear LED Luminaires are designed for installations where moisture, dirt, dust, corrosion and vibration may be present, and Type 3, 4X IP66 areas where wind, water, snow or high ambients can be expected. They can be used in locations made hazardous by the presence of flammable vapors or gases or combustible dusts as defined by the NEC/CEC.

ABS (American Bureau of Shipping) type approval for use on decks, vessels, platforms, barges, ships and boats. Also suitable for docks and marinas.

NSF (National Sanitation Foundation) approved for "Food Handling" areas, typically requiring non-glass lighting.

Typical applications include manufacturing plants, and certain chemical and petrochemical processing facilities, sewage treatment plants, off-shore and dockside installations, garages, storage facilities, tunnels, and grain/food facilities.

Compliances

- UL-8750 for LED lighting
- ANSI/UL 1598(A)
- UL-844 Standard for lighting fixtures for hazardous locations, Class I, Division 2; Class II, Divisions 1 and 2; Class III
- CSA C22.2 no. 137-M1981 electric luminaires for use in hazardous locations
- Enclosed and gasketed
- Type 3, 4X, IP66

Materials

- Housing – one piece fiberglass reinforced polyester or 316 Stainless Steel
- Lens – Clear Lexan® impact resistant polycarbonate lens (Lexan is a registered trademark of SABIC)
- Two 3/4" NTP hubs – one at each end (includes one 3/4" close-up plug and two 3/4"x1/2" reducers for maximum user flexibility – LZ2NL hubs aluminum; LZ2SL hubs 316 Stainless Steel)

LED Features and Standards

Supplemental **20KA/10KV Surge Protection** is **standard** (for 120-277 VAC models)
10KA/10KV Surge Protection (for 347-480 VAC)

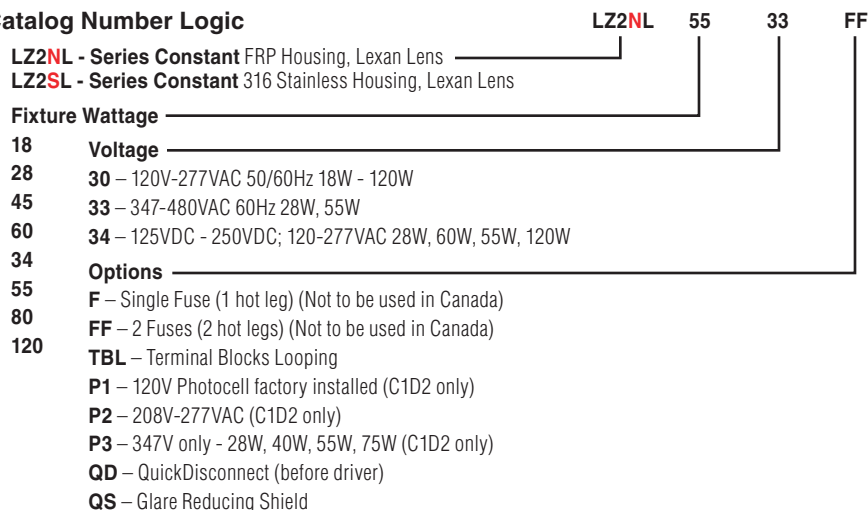
- Many Midpower LEDs blend light to simulate fluorescent tube
- Crisp White Light for Excellent Color Rendering – Chromaticity 5000K (CCT); approx. 70 CRI
- Energy Savings – High lumens per watt
- LED Array Life – 100,000+ hours with 70% initial lumens

- Long Fixture Life – 50,000 - 55,000 maintenance free hours
- Ambient suitability -40°C to 55°C up to 120W
- Instant On – Including after power interruption
- World Voltage 120 - 277VAC 50/60Hz
- Solder-LESS LED Board Connections – Vibration Resistant

LED VS FLUORESCENT WATTAGE & DELIVERED LUMENS

LED WATT	LUMENS	L/W	FLUORESCENT	LUMENS	L/W
18W	2557	150	40W 1x40W BX	2471	63
28W	3775	144	55W 1x55W BX	3766	65
34W	5075	149	56W 2x28T8	4676	71
45W	5562	137	64W 2x32T8	4772	80
55W	7577	144	108W 2x54T5HO	8088	67
60W	7618	132	120W 2x60T12HO	6965	56
80W	11140	137	162 3x54T5HO	11619	65

Catalog Number Logic



LIGHTING

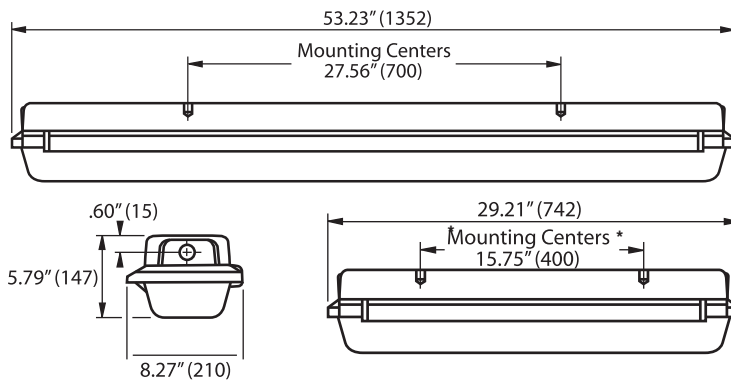
LZ2NL/LZ2SL SERIES



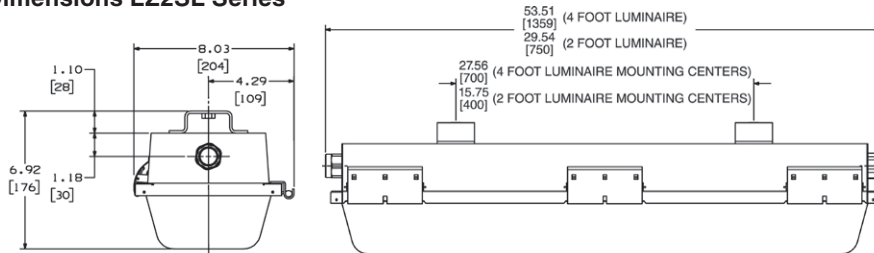
LZ SERIES – ORDERING INFORMATION & TECHNICAL DATA

ORDERING INFORMATION AND AMBIENT SUITABILITY									C1D2		C2D1 LZ2NL GRPS. FG LZ2SL GRPS. EFG		C1Z2 AEx nA Ex nA	
FIBERGLASS	CATALOG NUMBER WEIGHT LBS/KG	STAINLESS	WEIGHT LBS/KG	WATTS	LENGTH	VOLTAGE	AMPS	DELIVERED LUMENS	40°C	55°C	40°C	55°C	40°C	55°C
LZ2NL1830	12/5.4	LZ2SL1830	13/5.9	18	2'	120-277VAC	0.15 - 0.06	2557	T5	T4A	≤ 135°C	≤ 135°C	T5	T4
LZ2NL2830	12/5.4	LZ2SL2830	13/5.9	28	2'	120-277VAC	0.23 - 0.10	3775	T5	T4A	≤ 135°C	≤ 135°C	T5	T4
LZ2NL4530	12/5.4	LZ2SL4530	13/5.9	45	2'	120-277VAC	0.38 - 0.16	5562	T5	T4A	≤ 135°C	≤ 135°C	T5	T4
LZ2NL6030	14/6.4	LZ2SL6030	15/6.8	60	2'	120-277VAC	0.50 - 0.22	7618	T4A	-	≤ 135°C	-	T4	-
LZ2NL3430	23/10.4	LZ2SL3430	24/10.9	34	4'	120-277VAC	0.28 - 0.12	5075	T5	T4A	≤ 135°C	≤ 135°C	T5	T4
LZ2NL5530	23/10.4	LZ2SL5530	24/10.9	55	4'	120-277VAC	0.46 - 0.20	7577	T5	T4A	≤ 135°C	≤ 135°C	T5	T4
LZ2NL8030	23/10.4	LZ2SL8030	24/10.9	80	4'	120-277VAC	0.67 - 0.29	11140	T5	T4A	≤ 135°C	≤ 135°C	T5	T4
LZ2NL12030	25/11.3	LZ2SL12030	26/11.8	120	4'	120-277VAC	1.00 - 0.43	16010	T4A	-	≤ 135°C	-	T4	-

Dimensions LZ2NL Series



Dimensions LZ2SL Series



REPLACEMENT PARTS:

LZ2N4LENS	4' Lens only LZ2NL/LZ2SL
LZ2N2LENS	2' Lens only LZ2NL/LZ2SL
LZ2N4BAR	4' Locking Bar only LZ2NL
LZ2N2BAR	2' Locking Bar only LZ2NL
LZ2S-LATCH	Latch and Spring LZ2SL

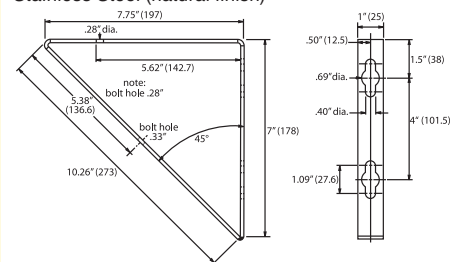
*Mounting Centers are 1/4"-20" tapped for user all thread rod or below accessories.

Mounting Accessories

Wall Bracket Set

Part Number LZWB

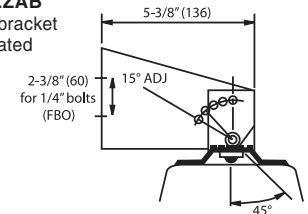
Stainless Steel (natural finish)



Adjustable Wall Bracket Set

Part Number LZAB

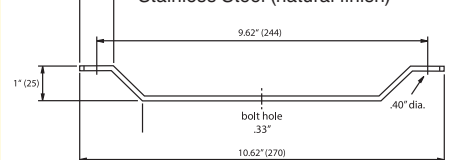
Stainless Steel bracket with ceramic coated pivot bolt



Ceiling Bracket Set

Part Number LZCB

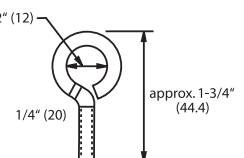
Stainless Steel (natural finish)



Eyebolt Set

Part Number LZEB

Stainless Steel bolt with lockwasher & nut (natural finish)



Suspension Chains (2 required)

Part Number HFX-SC

36" length plated steel chain with snap link ends For use with LZEB