

Catalog Number	
Notes	Type

## HXPL Series

### Hazardous Area Lighting Fixtures



#### Description

- Versatile heavy-duty, explosion-proof LED fixture designed for hazardous environments where flammable gases or vapors, flammable liquids, combustible dust and/or ignitable fibers may exist.
- Suitable for wet locations and marine environments where saltwater spray is an issue.
- Also suitable for indoor and outdoor areas where corrosive chemicals exist.
- Certain airborne contaminants may adversely affect the functioning of LEDs and other electronic components, depending on various factors such as concentrations of the contaminants, ventilation, and temperature at the end-user location. [Click here for a list of substances that may not be suitable for interaction with LEDs and other electronic components.](#)

#### Optics

- Explosion-proof, impact and heat resistant glass tubes, provide LED protection.
- Optional wire guard and/or clear polycarbonate shield available for additional security.
- Heavy gauge extruded aluminum reflectors (2.5 millimeters thick), with high gloss reflective finish. Resists dents and corrosion. Easy, quick removal for cleaning.

#### Electrical

- Replaceable Class 2 LED driver and circuit boards.
- Standard color temperature — cool white (4000 K CCT). Additional options are available — see catalog number logic page.
- 0-10 Volt Dimming Available.
- Driver has 1.5kV surge protection, for additional surge protection against power line transient surges, installer will need to provide remote surge protection.

#### Mechanical

- Factory sealed.
- Fixture constructed of corrosion-resistant, copper-free aluminum alloy (less than 0.4% copper).
- Over-sized, finned driver housing provides greater heat dissipation and extended driver life.
- Maintenance can be done quickly from either end of the fixture. All access covers are screw type and interchangeable with O-ring seals. Easily accessible and externally mounted.
- Suitable for -20°C to +55°C Ambient Temperature.

#### Listings

- UL844 listed (see matrix on page 3):
  - Class 1, Division 1 & 2, Groups C, D
  - Class 2, Division 1, Groups E, F, G
  - Class 3
- Simultaneous presence
- UL 1598A Marine Outside
- UL 1598 - Wet Location
- NEMA 3, 4X, 7CD & 9EFG
- IP66
- Paint Spray Booth

#### Warranty

5-year limited warranty on the fixture. Complete warranty terms located at: [www.acuitybrands.com/CustomerResources/Terms\\_and\\_Conditions.aspx](http://www.acuitybrands.com/CustomerResources/Terms_and_Conditions.aspx)

**Note:** Actual performance may differ as a result of end-user environment and application.

All values are design or typical values, measured under laboratory conditions at 25 °C.

Specifications subject to change without notice.



#### Typical Applications

- Paint Spray Booth
- Coal & Dust Storage
- Petroleum Refineries
- Ethanol Facilities
- Chemical Plants
- Waste Water & Water Treatment Plants
- Power Generation Plants

#### Dimensions: Inches (millimeters) unless otherwise noted.

See individual fixture dimensions and weight specifications on page 2.

## ORDERING INFORMATION

**Example:** HXPL 4L 2 3T AS

Series	Lumens	Fixture length	Number of tubes	Voltage	Options
HXPL	3L 3000 nominal lumens (2ft, 2 tube) <sup>1</sup>	2 2 foot	2T 2 tubes	AS 120-277V	EM EM battery backup, 10W, Certified in CA Title 20 MAEDBS <sup>3</sup>
	4L 4000 nominal lumens (2ft, 3 tube) <sup>1</sup>	4 4 foot	3T 3 tubes	12 120V <sup>2</sup>	EMO Emergency operation only <sup>3,4</sup>
	5L 5000 nominal lumens (4ft, 2 tube) <sup>1</sup>		4T 4 tubes	20 208V <sup>2</sup>	DM Dimmable (0-10V DC)
	8L 8000 nominal lumens (4ft, 3 tube)			24 240V <sup>2</sup>	IF Inline fuse (external) <sup>5</sup>
	10L 10000 nominal lumens (4ft, 4 tube)			27 277V <sup>2</sup>	OB Outboard option
					3000K 3000 K (CCT)
					5000K 5000 K (CCT)

Accessories: Order as separate catalog number.			
HXPL22TSSG	Stainless steel guards (2L, 2ft)	HXPL43TPS	Polycarb shield (3L, 4ft)
HXPL42TSSG	Stainless steel guards (2L, 4ft) <sup>6</sup>	HXPLWCMK	Wall/ceiling mounting kit <sup>8</sup>
HXPL43TSSG	Stainless steel guards (3L, 4ft)	HXPLSMK	Shock mounting kit <sup>8</sup>
HXPL23TPS	Polycarb shield (3L, 2ft)	HXPLDMK	Drop mounting kit <sup>8</sup>
HXPL22TPS	Polycarb shield (2L, 2ft)	HXPLBMK	Beam mounting kit <sup>8</sup>
HXPL42TPS	Polycarb shield (2L, 4ft) <sup>7</sup>	HXPLUMK	Unistrut mounting kit <sup>9</sup>

#### Notes

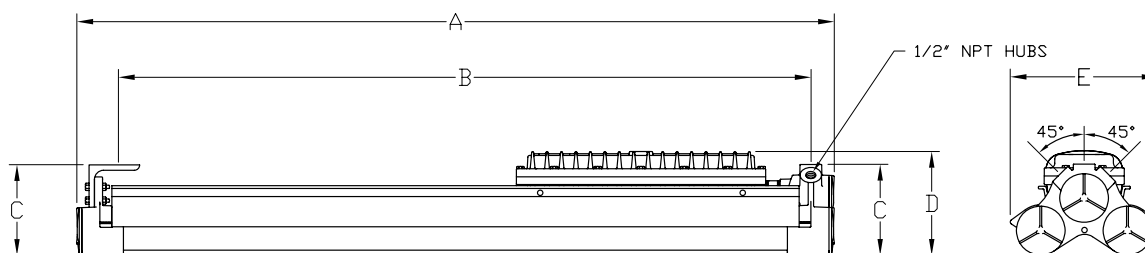
- EM or EMO option not available with 2 ft. 3 tube fixture.
- Must specify for IF option.
- Not compatible with DM.
- EMO option available for 2 ft 2 tube fixture only.
- Fuse option not available for marine listed fixtures.
- Four lamp fixtures require two HXPL42TSSG guards.
- Four lamp fixtures require two HXPL42TPS shields.
- For 2 lamp fixtures only.
- For 4 lamp fixtures only.

# HXPL Series

Hazardous Area Lighting Fixtures

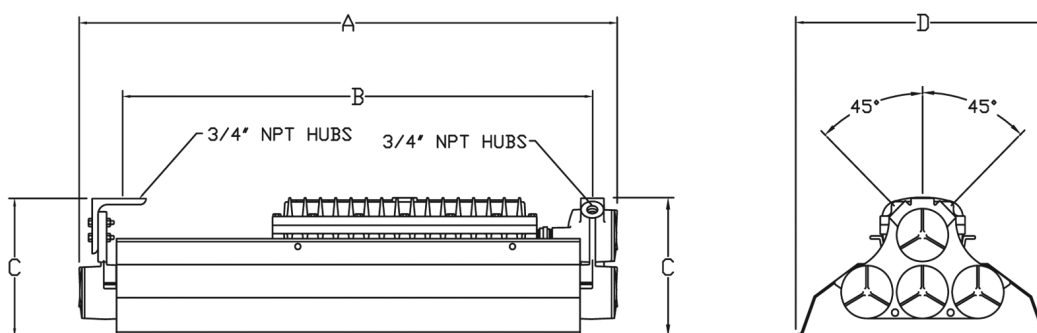
## DIMENSIONAL DATA

### 2 lamp fixture dimensions



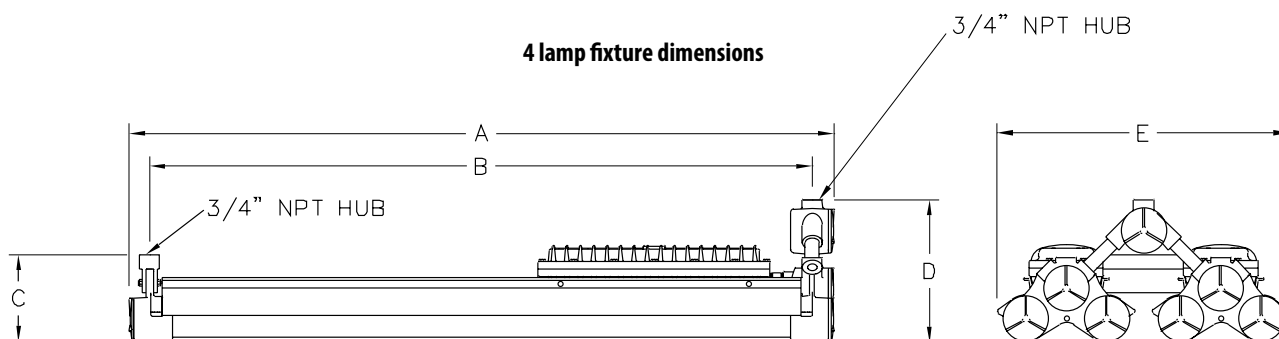
Package	A	B	C	D	E	Boxed Weight
Two-tube, four-foot	53"	48.5"	6.5"	7"	11.5"	65 lbs.
Two-tube, two-foot	29"	24.5"	6.5"	7"	11.5"	40 lbs.

### 3 lamp fixture dimensions



Package	A	B	C	D	Boxed Weight
Three-tube, four-foot	53"	48.5"	8.9"	16.3"	78 lbs.
Three-tube, two-foot	29"	24.5"	8.9"	16.3"	47 lbs.

### 4 lamp fixture dimensions



Package	A	B	C	D	E	Boxed Weight
Four-tube, four-foot	53"	49.4"	6.8"	11.3"	23.2"	138 lbs.

## HXPL Series

Hazardous Area Lighting Fixtures

### OPERATIONAL DATA

#### Operating Characteristics

Package	Ambient Rating (120V - 277V)	Delivered Lumens 4000 K CCT @ 25C <sup>1</sup>	Wattage @ 120V	LPW @ 4000 K
HXPL3L22TU	-4°F to 131°F (-20°C to 55°C)	2783	26.6	104.6
HXPL4L23TU	-4°F to 131°F (-20°C to 55°C)	4110	36.75	111
HXPL5L42TU	-4°F to 131°F (-20°C to 55°C)	5450	46.9	116.2
HXPL8L43TU	-4°F to 131°F (-20°C to 55°C)	8220	73.5	111.8
HXPL10L44TU	-4°F to 131°F (-20°C to 55°C)	10918	93.6	116.6

#### Projected Lumen Maintenance (TM-21)<sup>2</sup>

Package <sup>3</sup>	0 Hours	15,000 Hours	30,000 Hours	45,000 Hours	60,000 Hours
HXPL10L44TU @ 25°C	1.0	0.95	0.91	0.87	0.83
HXPL10L44TU @ 40°C	1.0	0.94	0.89	0.85	0.80
HXPL10L44TU @ 55°C	1.0	0.92	0.86	0.80	0.74

#### Notes

- 1 Absolute photometry calculated in accordance with IESNA LM-79-08.
- 2 Calculated using data collected according to LM-80 and represents lumen maintenance of the LED package.
- 3 Project lumen maintenance factors at max. ambient temperature per lumen package.

#### Operating Temperature Code for Hazardous Locations:

Package <sup>1,2</sup>	Max Ambient Range	Class 1 Division 1 Groups C, D	Class 2 Division 1, Groups E, F, G, Class 3	Simultaneous Presence Class 1 & Class 2	Class 1, Zone 1	Class 1, Zone 2
HXPL3L22T	55°C	T6	T4A	T4A	Groups IIA, IIB	Groups IIA, IIB, IIC
HXPL4L23T	55°C	T6	T5	T5	Groups IIA, IIB	Groups IIA, IIB, IIC
HXPL5L42T	55°C	T6	T4A	T4A	Groups IIA, IIB	Groups IIA, IIB, IIC
HXPL8L43T	55°C	T6	T5	T5	Groups IIA, IIB	Groups IIA, IIB, IIC
HXPL10L44T	55°C	T6	T4A	T4A	Groups IIA, IIB	Groups IIA, IIB, IIC

#### Notes

- 1 Supply wire temperature is 90°C.
- 2 UL-1598 Marine approved.