

# MISCELLANEOUS

## Lay-in Grounding Lugs

### Features:

- Each lug takes a range of cable sizes
- Heavy duty slotted or hex head screw
- Aluminum layin lugs are suitable for use with copper or aluminum conductors
- Copper layin lugs are suitable for use with copper or aluminum conductors

### Standard Materials:

Aluminum or  
Copper

### Standard Finish:

Aluminum Lug - Zinc plated  
Copper Lug - Natural

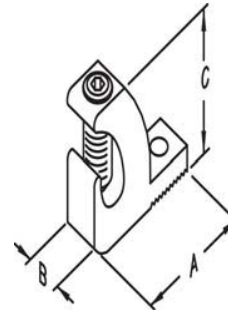
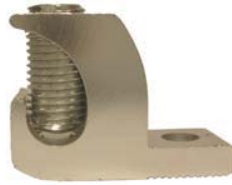
### Applicable Third Party

Standards:

UL Standard: 467  
Fed. Spec. W-F-408E  
NEMA: FB-1

\* UL Listed

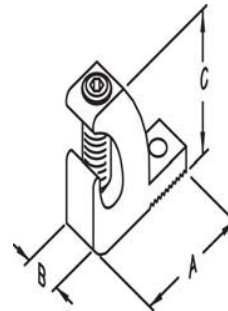
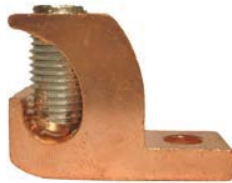
^ Not UL Certified



4/14AL and 1/0-8AL  
furnished with slotted  
screw. 3/0-6AL and  
250MCM-6AL  
furnished with hex  
head screw

### Aluminum Lugs

CATALOG NUMBER	LUG SIZE	DIM A	DIM B	DIM C	PCS/UNITS PER BOX	WEIGHT PER C
* 4-14AL	4-14	1-1/16"	3/8"	3/4"	1500	1.9
* 1/0-8AL	1/0-8	1-1/2"	5/8"	1-1/8"	480	6.6
* 3/0-6AL	3/0-6	2"	13/16"	1-1/2"	198	16.4
^ 250MCM-6AL	250MCM-6	2-3/16"	13/16"	1-11/16"	155	18.8



4/14CL and 1/0-8CL  
furnished with slotted  
screw. 3/0-6CL and  
250MCM-6CL  
furnished with hex  
head screw

### Copper Lugs

CATALOG NUMBER	LUG SIZE	DIM A	DIM B	DIM C	PCS/UNITS PER BOX	WEIGHT PER C
* 4-14CL	4-14	1-1/16"	3/8"	3/4"	720	4.4
* 1/0-8CL	1/0-8	1-1/2"	5/8"	1-1/8"	200	15.9
* 3/0-6CL	3/0-6	2"	13/16"	1-1/2"	84	40.0
^ 250MCM-6CL	250MCM-6	2-3/16"	13/16"	1-11/16"	72	50.3

